

January 21 1893

020481

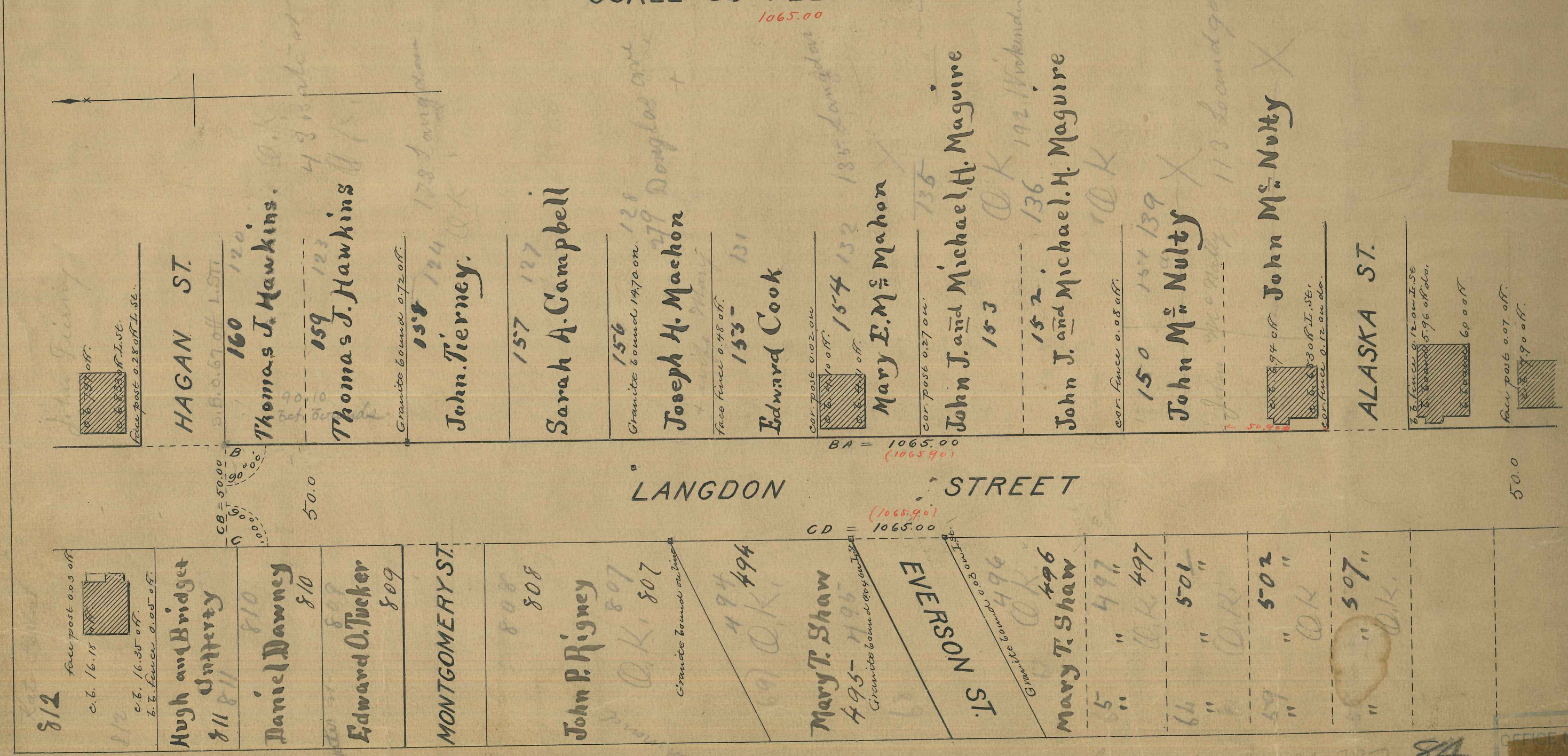
PLAT OF LANGDON STREET

FROM SHERMAN ST. TO HAGAN ST.

IN TWO SHEETS

SCALE 50 FEET PER INCH.

1065.00



HAGAN ST.

ALASKA ST.

LANGDON STREET

MONTGOMERY ST.

EVERSON ST.

face post 0.03 off.
c.b. 16.15
c.z. 16.35 off.
b. b. fence 0.05 off.

face post 0.28 off I. St.
c.b. 17.97 off.

CB = 50.00
50.00

CD = 1065.00
(1065.90)

BA = 1065.00
(1065.90)

84
A-72

OFFICE NO. 17